



NewsFlashes

MAY 2026

LREC crews reconfigured the Dent Substation to accommodate new underground updates in mid-April.



CEO COLUMN

Vegetation Management in Full Swing

With the shift into Spring, it is a good time to reflect on the approach the Cooperative takes to vegetation management and why it is such an important part of what we do at Lake Region Electric Cooperative (LREC). The warmer temperatures are allowing us to expand our Vegetation Management (VM) plan of cutting, trimming, and mowing trees and brush over the coming months. In fact, some of our members have likely already received postcards notifying them of our plans to begin working in their area.

I wanted to use this month's column as a quick Vegetation Management refresher—why we do it, how we do it, and the role it plays in keeping power reliable and our crews safe.

Since 2025, over 32% of the outages resulting from severe weather were caused by interference from trees. To combat this, LREC has invested \$3M specifically toward VM. And, while our VM program does include other methods such as mowing and spraying, when crews go out a large part of their effort is focused on clearing the **right-of-way** – ensuring a corridor

around power lines and easements is created and maintained with acceptable tree, shrub, and other growth.

Maintaining this clear space does more than help prevent outages caused by overgrown or fallen branches. It also plays a critical role in **lineman safety**. Clear access allows crews to restore power more quickly and safely, especially during storms or emergency situations.

Please help us keep our crews safe by following the right-of-way guidance image (*pictured below to the left*). If you are planning to plant trees this spring, make sure to consider both the size of the tree at maturity and its proximity to power lines.

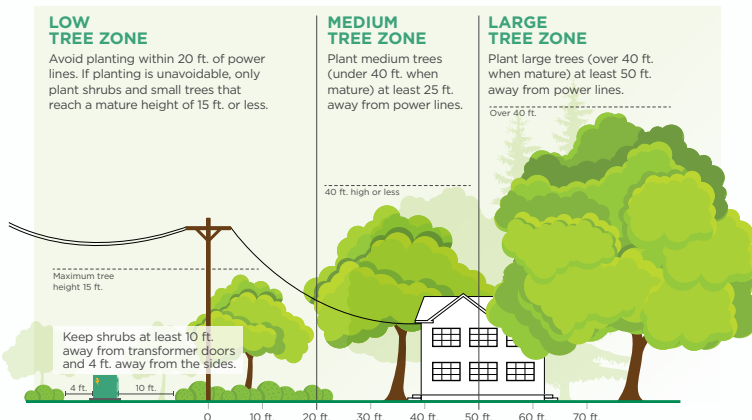
For more information, scan the QR code or visit www.lrec.coop/vm to view the Vegetation Management page on our website. You'll find details on our full VM policy, areas scheduled for upcoming work, planting tips, and how to contact our Arborist if you have questions.



As always, my hope is that our monthly *NewsFlashes* delivers relevant, timely information that's both helpful and easy to understand. If there's a topic or issue you'd like to see covered in a future issue, I encourage you to reach out and let me know.

Cooperatively yours,

Joel Janorschke, CEO



Ask the CEO

Email: jjanorschke@lrec.coop

Cell: (320) 292-4036

Operation Round Up Recipients

Operation Round Up (ORU) allows LREC members to support local charities by rounding up their monthly bills. The small extra amounts, from \$0.01 to \$0.99, collectively make a meaningful impact in the community. Please consider signing up to be part of Operation Round Up and make an impact in our community. Sign up at www.lrec.coop/oru.



A total of **\$30,200** was awarded by the Operation Round Up Board of Trustees at the April 13th meeting. The total amount awarded since 2007 is **\$1,023,040**.

- ◆ **\$10,000** to *Ottertail Family & Recreational Center* for childcare pods and community and wellness center
- ◆ **\$5,000** to *Apple Tree Dental* for dental equipment to expand access to dental care
- ◆ **\$5,000** to *Rivers Area Memory Café* for gatherings fostering connection, learning, and joy for those experiencing memory loss
- ◆ **\$2,500** to *Northern Lights Council – Scouting America* for registration support, camping scholarships, and uniform costs for participants
- ◆ **\$2,000** to *Henning Area Community Association* for enhancements to playground for ADA accessibility
- ◆ **\$1,200** to *Pelican Rapids Multicultural Committee* for International Friendship Festival
- ◆ **\$1,000** to the *History Museum of East Otter Tail County* for new computers
- ◆ **\$1,000** to *MN Deer Hunters Association of Fergus Falls* for youth camp and firearm safety classes
- ◆ **\$1,000** to *Lakes & Prairies Community Action Partnership, Inc.* for materials for home repair projects for those in need
- ◆ **\$500** to *Our Savior's Ten Mile Lake Quilters* for quilting supplies
- ◆ **\$500** to *Fergus Falls Police Department* for open house to teach kids about safety
- ◆ **\$500** to *Save the Trinity/ Trinity Center* for supplies for kids' quilt camp

Board of Trustees (L to R): Front - Brian Mancini, Diane Thorson, Patty Johnson; Middle - Julie Ladeen, Denise Laymon, Karen Hart; Back - Harold Stanislawski; Missing - Duane Hanson

Cooperation in Action

Over the past year, *NewsFlashes* has included a spotlight on each of the seven operating principles that set co-ops apart from other utility companies. In January, **Cooperation Between Cooperatives** was demonstrated in real time as crews from across the state traveled to Virginia to assist in restoring widespread outages following a significant ice storm.

In a similar spirit, collaboration between LREC and Mahnomen-based Wild Rice Electric Cooperative (WREC) resulted in creating an opportunity for the offices to work together and address the needs of both organizations within their Information Technology (IT) departments.

At the time, Wild Rice Electric was in need of additional IT support. In addition, as a result of a vacancy in the full-time IT role at Lake Region, we determined that the IT needs of the co-op were too large for a single full-time employee but didn't justify adding another at full-time.

Through a series of meetings between CEOs and other senior leadership members from both co-ops, we came up with a solution that was a win for both co-ops. In September, LREC recruited the IT Shared Services Manager position, who would oversee day-to-day IT operations at LREC and the IT shared services function for WREC along with other future clients. Once the contract was finalized between LREC and WREC in November, we recruited for the IT Help Desk Technician role – a position that is technically a full-time LREC employee, but shared with and working onsite at Wild Rice Electric three days a week as their designated IT contact. The other two days are spent at LREC, helping assist with our IT needs.

This sharing of resources is already enhancing IT capabilities for both co-ops. It proactively plans for department departures and peak-workloads, and it strengthens the cooperative network to benefit our members in a tangible way.



Dylan Aafedt
Vice President of
Business Solutions



STRENGTHENING THE GRID

Last month, LREC crews continued the work on and around the Dent Substation required to complete the upgrade and conversion of 1.48 miles of vulnerable overhead line to underground that began in Fall 2025. In mid-April, LREC crews reconfigured the Dent Substation to accommodate new underground updates (see banner image on front page). Phase 2 (retirement) has already begun and work involving pole removal is planned for this year as conditions allow. Once fully complete, the finished project will deliver significantly reliable, stable service for members in that area.

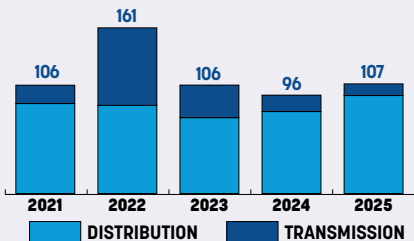


By the Numbers As of April 2026 unless otherwise listed.

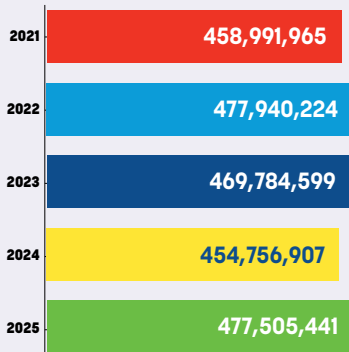
OVERHEAD TO UNDERGROUND POWERLINE MIX



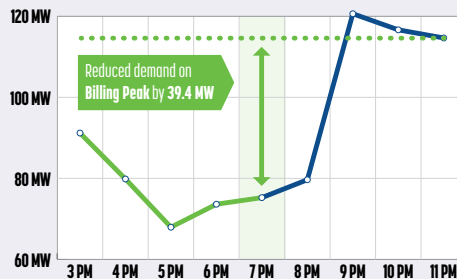
OUTAGE TIME PER MEMBER LOCATION/YEAR (MINUTES)



ENERGY SALES (kWh)

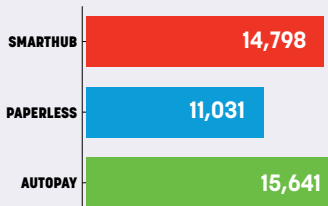


PEAK LOAD SHED Control Date Jan. 26, 2026



By controlling interruptible loads on the monthly billing peak LREC saved \$849,175 in wholesale power costs for January 2026.

SERVICE STATISTICS (USERS)



Calendar

- **May 25th** – LREC offices will be closed for **Memorial Day**
- **June 26th** – Youth Baseball Clinic in Frazee from 10 a.m.- noon
Register for free at www.twins.com/clinics

Reserve Your Generator Installation

Interested in one of our generator packages? Don't wait. Installation spots fill quickly each season, and now is the best time to secure your place on the schedule. Call today at (800) 552-7658 to start the process and schedule your consultation.



Visit www.lrec.coop/generator or scan the QR code to learn more.

Employee Spotlight

Dave Boe Staking Technician

Family: My wife is Denise. I have two sons — Ryan (Heather) and Dustin (Jenna), and two granddaughters as well, Leighton and Charlotte.

How long have you worked at LREC?
31 years — since March 1995.

Starting Position and Current Role: I was hired as a meter reader. I was in that position for three years and then moved into my current position as a Staking Technician.

How have things changed since you started?
Automation. We went from physically driving around and reading meters to fully automated meters that can be read through the power lines from the office. The staking sheets and maps we used were all paper as well. Now everything is done on iPads and computers.

What do you like best about your job? I enjoy working with our members to find the best ways to get electricity where it's needed and seeing the results come together. Along the way, I've built strong relationships with electricians and members who have become friends over the years, including working with second and third-generation families.

Any advice for those considering it as a career?
Working at Lake Region Electric has been a really rewarding career. I get to work with great people in a great area, and LREC's territory is huge — full of lakes, woods, and farmland — so traveling all the backroads is one of the best parts of the job.

You've been with LREC a long time. Any good stories to share? One of the most memorable experiences was helping the linemen during a summer storm restoration. I'll never forget pulling into a summer camp and hearing everyone cheer when they saw an LREC truck arrive — they had been without power for several days.

Hobbies/spare time activities outside of work:
In my free time, I enjoy boating, fishing, biking, being outdoors, socializing with friends, and working in the yard.

Dave Boe
Staking Technician





Save with Home Energy Audits

The Zero Homes platform offers a free, quick, and easy remote process to start your audit that gives you personalized insights into how your home uses energy. Download their smartphone app to receive a custom *energy profile* with recommendations designed to help you lower your electric bills, increase comfort, and make informed decisions.

It's a simple and straightforward way to upgrade your home and start saving. Visit their website at www.zerohomes.io/minnesota to learn more and get started!

Cool Comfort, Smart Savings with ASHPs

For highly efficient and environmentally friendly summer cooling, a heat pump is a smart choice. Quiet and efficient, air source heat pumps (ASHP) move heat out of your home to keep you comfortable, while using less energy than many traditional cooling systems.

Plus, installing a heat pump may qualify you for rebates and reduced electric rates, making it an even greater value. You can estimate savings for your home through our *Amped to Save* program via **Zero Homes** – helping you switch to clean, efficient, all-electric systems.

Contact our Energy Service Experts at (800) 552-7658 for more details.

ASHP Rebates

Ductless Air Source Heat Pump*

- ≤ 1 Ton ≥ 14.3 SEER2 & ≥ 7.5 HSPF2 **\$150**
- ≤ 1 Ton ≥ 15.2 SEER2 & ≥ 8.1 HSPF2 **\$250**
- > 1 Ton ≥ 14.3 SEER2 & ≥ 7.5 HSPF2 **\$750**
- > 1 Ton ≥ 15.2 SEER2 & ≥ 8.1 HSPF2 **\$1,000**

Ducted Air Source Heat Pumps*

- ≤ 5 Ton ≥ 14.3 SEER2 & ≥ 7.5 HSPF2 **\$750**
- ≤ 5 Ton ≥ 15.2 SEER2 & ≥ 8.1 HSPF2 **\$1,000**

*1 per account/year

Ready to save? Explore rebates, dual fuel programs, and more at www.lrec.coop/ashp

Board Meeting Highlights

Lake Region Electric Cooperative's Board of Directors conducted its regular monthly meeting Thursday, February 26th, 2026.

Seven board members, CEO Joel Janorschke, department VPs, Pemberton Attorney Chad Felstul, MREA's Anthony Lenz, along with two other LREC staff, were present at the meeting.

The following reports were given:

Vice President of Business Solutions Dylan Aafedt reported on the annual cogeneration filing. As a part of this filing, what is called the ARCER rate is determined. This is the rate that we buy back our members' unused solar power.

MREA's Anthony Lenz reported on the annual state of safety for LREC. Subjects covered in this report include accidents and injuries that happened and were reported throughout the year, and training and events that MREA facilitates.

Pemberton Attorney Chad Felstul reported on relevant legal events that are affecting co-ops.

The following actions were taken:

Policy 610 on Member Rates was reviewed and the changes made were approved.

Board of Directors

As of April 22, 2026

DISTRICT 1

Kurt Krueger, *Vice Chair*
kkruieger@lrec.coop

DISTRICT 2

Cecil "Bud" Hensel, *Secretary/Treasurer*
chensel@lrec.coop

DISTRICT 3

Mike Brasel, *GRE Board of Directors Rep.*
mbrasel@lrec.coop

DISTRICT 4

Jeff Hildebrandt
jhildebrandt@lrec.coop

DISTRICT 5

Patrick Meyers
pmeyers@lrec.coop

DISTRICT 6

Charlie Blixt
cblixt@lrec.coop

DISTRICT 7

Tom Jennen, *Chair*
tjennen@lrec.coop

DISTRICT 8

Jim Gronbeck
jgronbeck@lrec.coop

DISTRICT 9

Gary Olson
garyolson@lrec.coop

LREC is an equal opportunity provider and employer.



OUR MISSION

Provide our members with **safe, reliable, and affordable energy**, and lead by offering **innovative services** to grow the cooperative.

OUR VISION

Leading, empowering, and guiding members to use energy wisely to secure a better future for **our families, our communities, and our world.**

OUR VALUES

- ◆ Safety
- ◆ Integrity
- ◆ Innovation
- ◆ Accountability
- ◆ Open, honest communications
- ◆ Commitment to members, community, and employees